



Genvex 2010
Company presentation

AGENDA

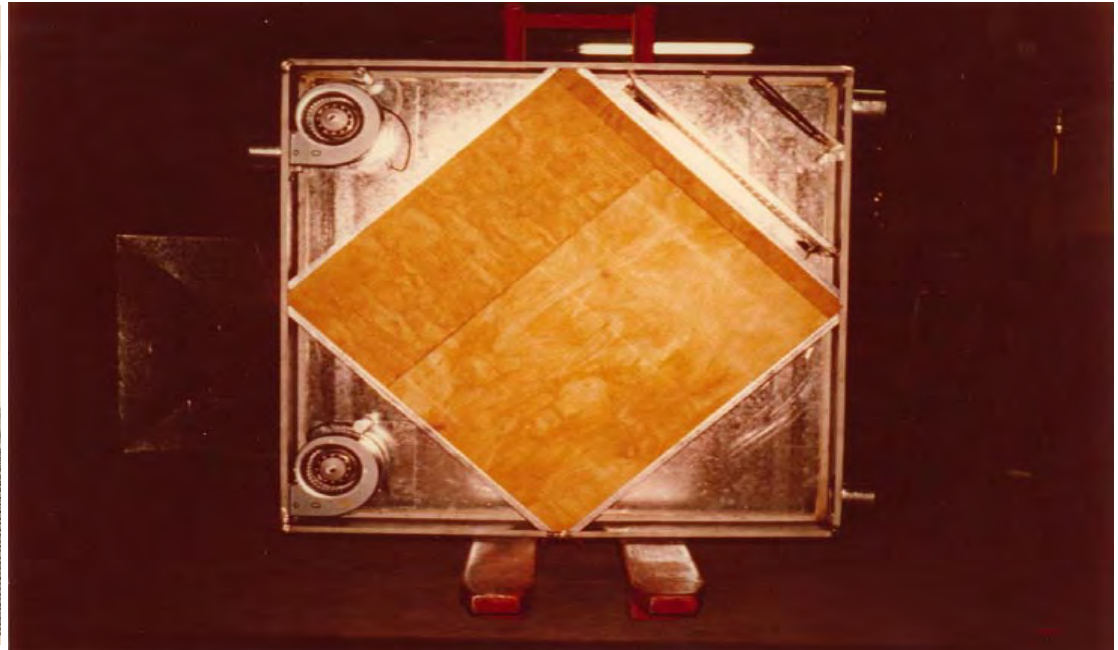


 ***History of Genvex***
Genvex today
Products

1974



Company founder
Bjarne R. Svendsen



▶ In May 1974 the first **passive heat-recovery ventilation (HRV) appliance** was introduced to the domestic market in Denmark.

1983



1983 - serial production of VANVEX and COMBI

1986



▶ **1986 - Active ventilation appliances in the „VPC“ version (heat pump, heating, cooling).**



2000: Moving from Copenhagen to Haderslev

2004: Genvex was taken by Schulthess Group

AGENDA



History of Genvex ***Genvex today*** Products





Genvex[®]

Vision

As one of the market leading suppliers of ventilation systems we will create energy efficient and healthy indoor climate for the benefit of the environment and our customers.

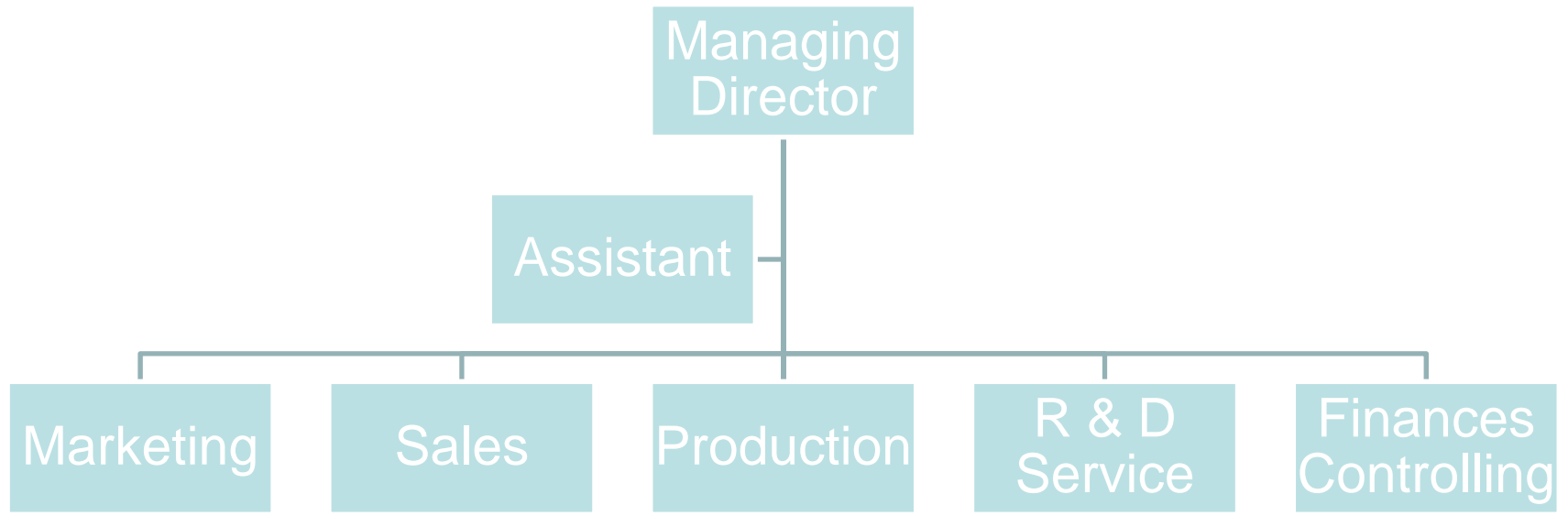
Through growth and employee involvement we will make GENVEX an attractive company.

Values

- We achieve results through motivated and involved employees.
- We act responsibly and keep our promises.
- We create a good atmosphere through an open and honest dialogue.
- We show respect and treat each other properly.

An employee of GENVEX 2010



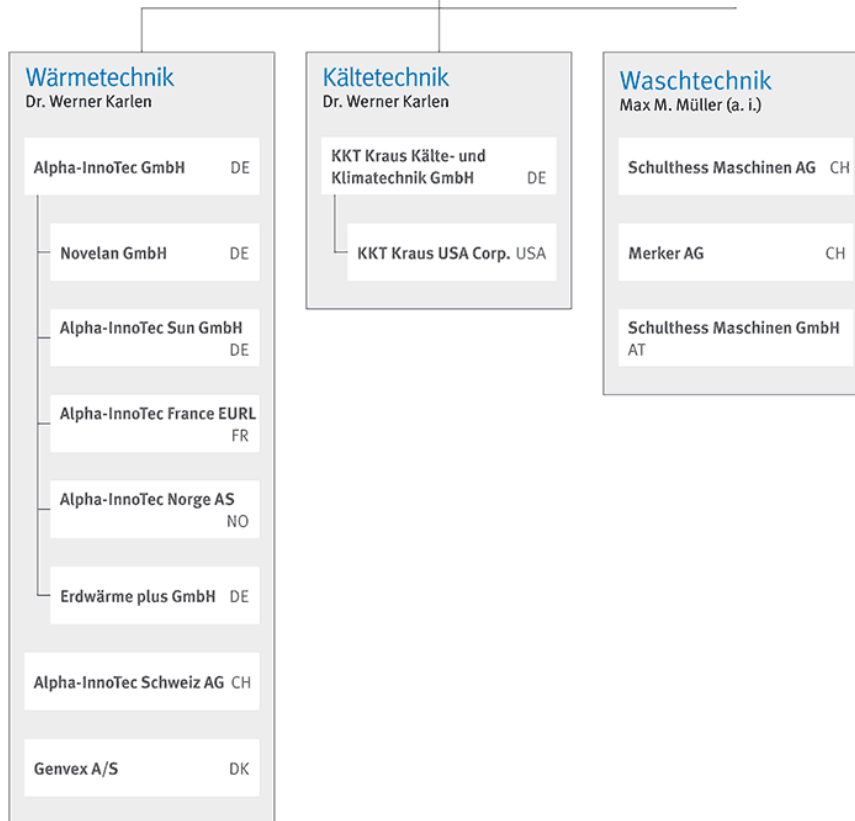




Schulthess Group

Schulthess Group AG
 Verwaltungsrat : Rudolf Kägi (Präsident), Dr. Peter R. Isler (Vizepräsident)
 Mitglieder: Prof. Dr. Christian Belz, Dr. Gero Büttiker, Thomas D. Rutz

Schulthess Group
 Geschäftsleitung : Dr. Werner Karlen (CEO), Max M. Müller (CFO)





DET NORSKE VERITAS MANAGEMENT SYSTEM CERTIFICATE

Certificate No. 31536-2008-AQ-DEN-DANAK

This is to certify that

Genvex A/S

Sverigesvej 6, DK-6100, Haderslev, Denmark

has been found to conform to the Management System Standard:

DS/EN ISO 9001:2000

This Certificate is valid for the following product or service ranges:

Development, production and marketing of ventilation equipment

This Certificate is valid until:
2011-08-31

Place and date:
Hellerup, 2008-08-22
for the Certification Dept. in:
DET NORSKE VERITAS, DANMARK A/S
CERTIFICATION



Certification audit has been performed by
Erik Melchior Christiansen
Lead Auditor



Rikke Topp Petersen
Management Representative

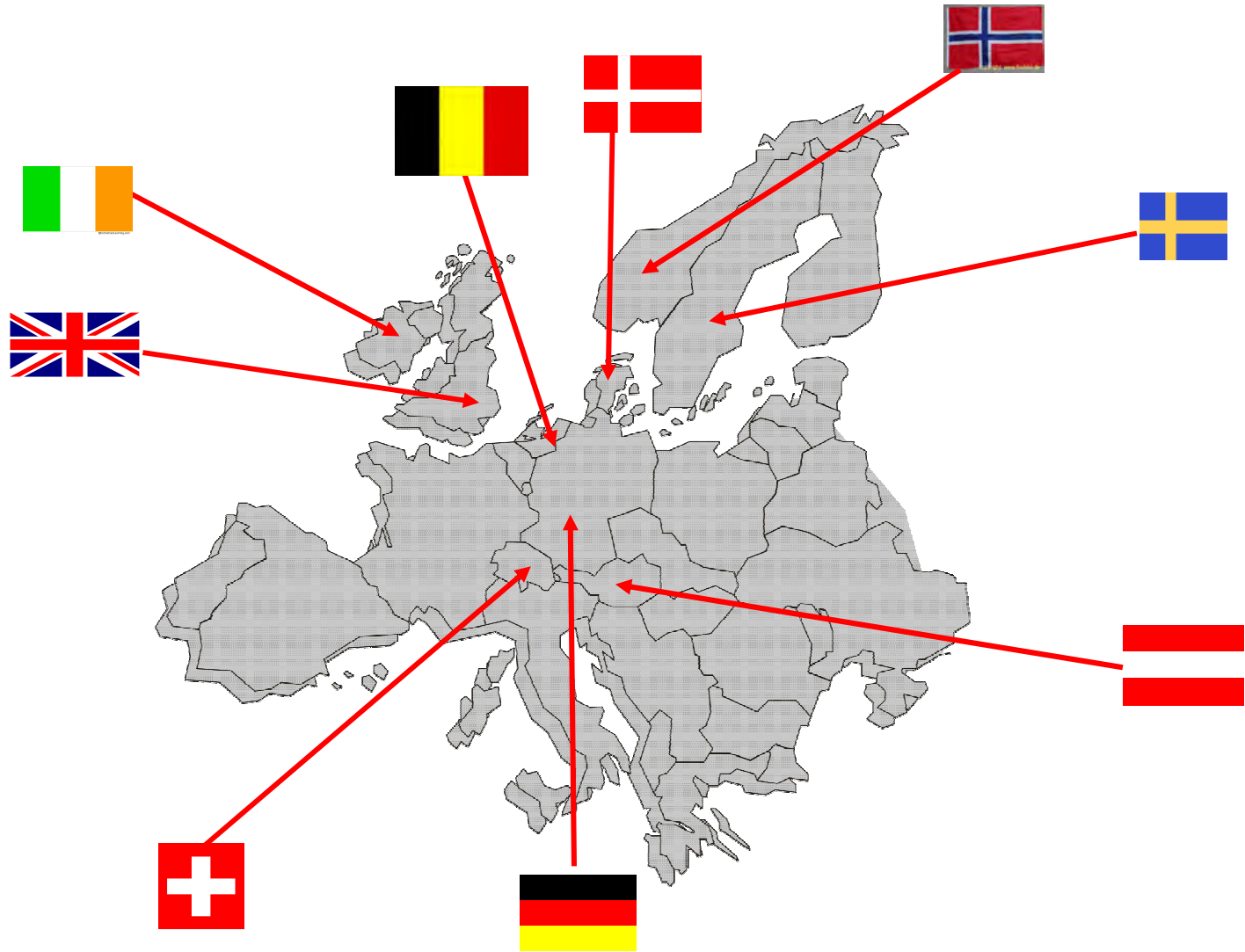
Lack of fulfilment of conditions as set out in the Certification Agreement may render this Certificate invalid.

Det Norske Veritas, Danmark A/S, Certification, Tuborg Parkvej 8, 2. DK-2900 Hellerup, Danmark. Tel: +45 39 45 48 00 www.dnv.com / www.dnv.dk

Real estate in Haderslev



Sales



GENWEX

AGENDA



History of Genvex
Genvex today

 ***Products***





Heating of domestic water

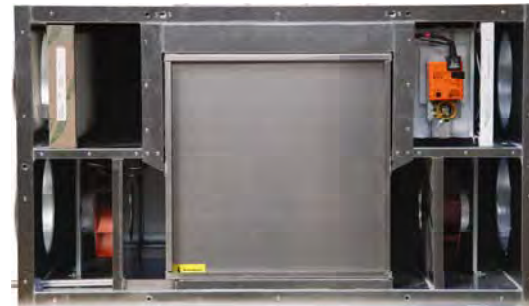
Vanvex



Heating of domestic water – counter current
heat exchanger - **Combi**



Air – heating/cooling - **active**



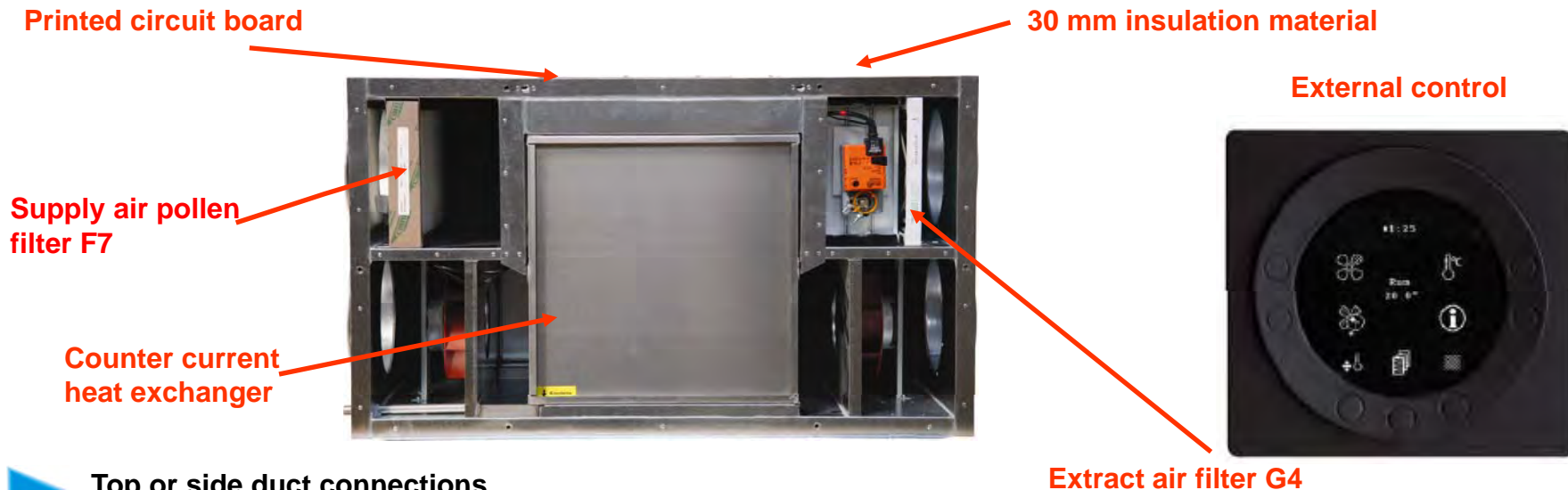
Counter current heat exchanger - **passive**





Passive ventilation appliances

Balanced ventilation for **single family dwellings** up to **300 m²**

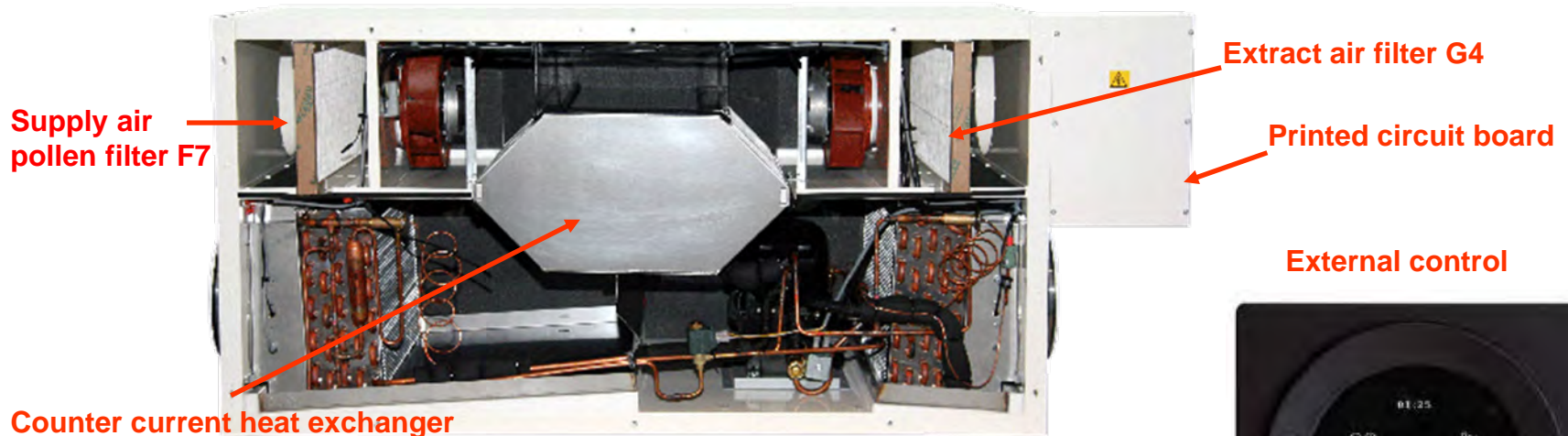


- ▶ Top or side duct connections.
- ▶ Counter current heat exchanger with a temperature efficiency of up to 95%.
- ▶ Left and right hand design by switching front and back plate and turning the unit 180°.
- ▶ Supply air pollen filter F7 and extract air filter G4 are integrated.
- ▶ Easy access to the filters due to demountable front plate.
- ▶ Cooling option with bypass damper, control and terrestrial heat exchanger.
- ▶ After heating water or electrical surface.
- ▶ Highly user-friendly by means of an external control.



Active ventilation appliances

Balanced ventilation for **single family dwellings** up to **330 m²**



- ▶ The ventilation appliance is constructed as a reversible heat pump.
- ▶ Heating and cooling of air in one appliance.
- ▶ At the same time a „passive“ counter current heat exchanger is integrated.
- ▶ The „passive“ counter current heat exchanger is always in function. The operating costs are low due to the yearly heat recovery and the operation of the heat pump, which depends on the need.
- ▶ Supply air pollen filter F7 and extract air filter G4 are integrated.
- ▶ Easy access to the filters by means of a demountable front plate.
- ▶ Left and right hand design available.
- ▶ Highly user-friendly by means of an external control.



Vanvex air-water heat pump

Domestic hot water heat pump 185 or 285 l

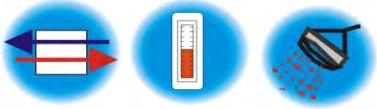


Vanvex 185 / 285 S

- ▶ Energy efficient appliance – COP = 3,2 - 3,5
- ▶ Price for heating the domestic hot water is approx. 1/3 compared with an ordinary electric water heater.
- ▶ Is capable of meeting the yearly demand for hot water of one family.
- ▶ Is equipped with embedded electric heating element to be used in an emergency.
- ▶ Internal enamel covering of hot water boiler protects against corrosion.



Vanvex Lite / R / RS



Combi air-air / air-water heat pump

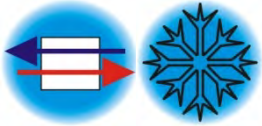
Balanced ventilation for **single family dwellings** up to **308 m²** combined with a domestic hot water heat pump of 185 l



- ▶ Combination of ventilation and domestic hot water heat pump.
- ▶ Counter current heat exchanger with a temperature efficiency of up to 95%.
- ▶ The „passive“ counter current heat exchanger is always in function. The operating costs are low due to the annual heat recovery and the operation of the heat pump, which depends on the need.
- ▶ Supply air filter F7 and extract air filter G4 are integrated.
- ▶ Highly user-friendly by means of an external control.

External control





Passive ventilation – industrial appliances

Balanced ventilation for the **industry**: 1.000 – 5.000 m³/h



- ▶ 3 sizes: up to 1.000 - 5.000 m³/h
- ▶ Cooling option
- ▶ Counter current heat exchanger with a temperature efficiency of up to 95 %